

HITACHI
Inspire the Next

Coding & Marking Solutions

Inkjet Printer

UX Series



HITACHI

Scan here

14372511
00011500

About the UX Series

For over 40 years, Hitachi has developed and produced high-performance inkjet printers based on the well-proven Continuous Inkjet (CIJ) principle for industrial marking.

Hitachi Industrial IJ printers are high-speed printers adopting a non-contact printing method, ideal for a wide range of applications. They are capable of applying best before dates, logos, barcodes, lot numbers and data matrix codes, which makes the new UX-Series the perfect solution for both complex and standard applications.

High Reliability







Hitachi Products are renowned for being extremely reliable in harsh environments. All functionally critical parts are manufactured in-house. The use of Hitachi's own components reinforces the high quality levels, reliability and excellent value for money.

Cost-Effective

The new economical ink recovery technique achieves industry-leading levels of make-up consumption and the very low maintenance costs minimise the total cost of ownership.

Global Sales & Service Network

Are you looking for a proven global company that can work with you at a local level? Hitachi offers a global sales and service network when marking, coding and traceability challenges demand a coordinated answer. For each of your locations, and across your entire organization we will champion your goals by providing international consistency, global perspective, broad expertise and coordinated service with dedicated contacts. Our global team applies its worldwide technical expertise to your unique challenges in a consistent way. Tangible deliverables and proven solutions are results of our business analysis and project implementation. In addition, cross-border project management and coordination between suppliers, OEM's and end-users are part of our deliveries. You gain more visibility and save time and money.

-  EFFICIENT INK RECOVERY
-  INTUITIVE PRINT CONTROL
-  INTELLIGENT FLUID CARTRIDGES
-  DURABLE PRINTHEAD
-  RELIABLE CIRCULATION SYSTEM
-  SIMPLE FLUID MANAGEMENT



The Hitachi UX Series is the clear leader for your non-contact printing needs

The UX Series improves the existing, reliable Hitachi continuous inkjet products and is versatile enough to provide industry-leading marking on food, beverage and dairy products, health and beauty products and a variety of containers from lip balm tubes to bag printing and oversized PVC piping.



Simplicity

Mess-free, Mistake-proof Fluid Refills

- Intelligent fluid cartridges reduce the possibility of hazardous fluid spills during refill. Shaped differently, the ink and make-up cartridges are easily identifiable as well as sized to fit in each respective receptacle.



RFID Recognition**

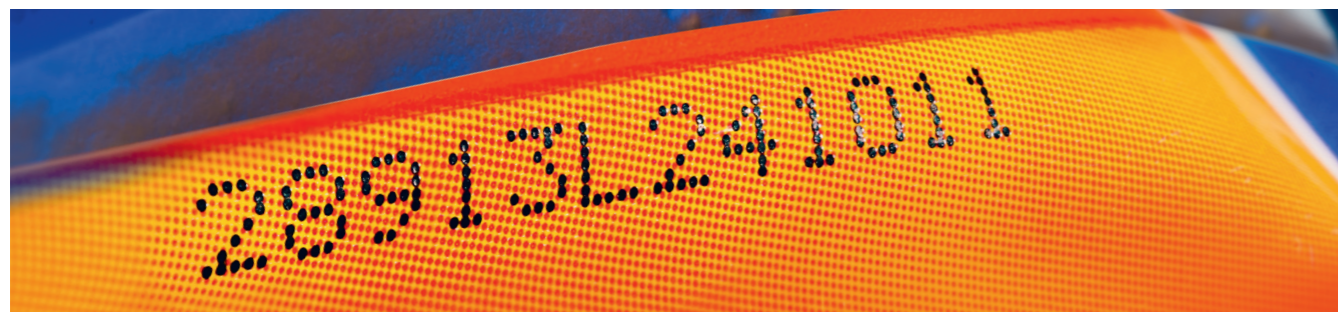
- Error reduction is key to increased uptime and that's why the UX Series now features RFID* recognition for ink and make-up replacement. A quick scan of each bottle allows the system to identify the fluid in question and instruct the operator based on compatibility.

* Radio-frequency identification
** Not available in some countries



Simple Economical Disposal

- Ink and makeup cartridges are good to the last drop, and drain fully into their respective reservoirs. Complete fluid evacuation allows ink and makeup containers to be disposed of easily instead of incurring costly hazardous disposal expenses.

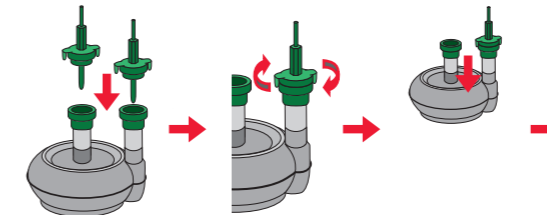


Stay informed

- On-screen icons provide simple, visual feedback to an operator. Ink and makeup solution level gauges show the current fluid level and indicate when it's time to replace ink. This allows for more efficient ink usage, reduces waste and further contributes to cost reduction.

Tool-less Filter Replacement

- Ink filters can be replaced without the use of tools or a technician, resulting in virtually zero downtime for easy maintenance. No more mandatory, timebased failure due to machine operation.
(Original Hitachi patent: EP 226 1037 A1 / EP 230 5470 A1)



IC Card with RFID Function

- With the new Hitachi IC Card* any login information and print data can be managed fast, easy, and safely.

User Login

By scanning the IC Card, only the registered user can login quickly without entering a password. Each user operation can be limited to prevent human error.

Print data selection

By scanning the IC Card the print data can be quickly called up. Prevent calling up incorrect data which may happen with manual operation.

* Option



Intuitive Machine Interface

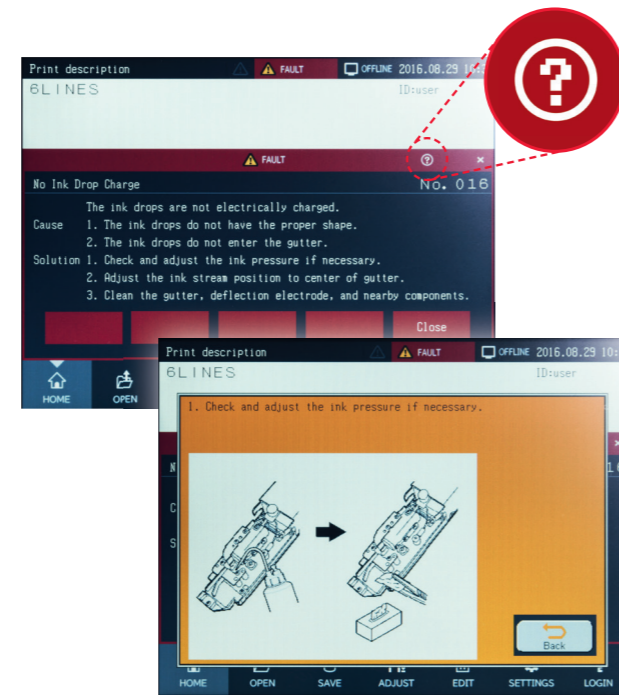
Intuitive User Interface

A 10.4-inch TFT LCD touch-panel screen provides a wide, easy-to-see viewing angle and intuitive operation. In addition, when changing print messages, a preview function allows the operator to verify on-screen what message will be changed to help avoid erroneous printing.



On-Screen Guidance

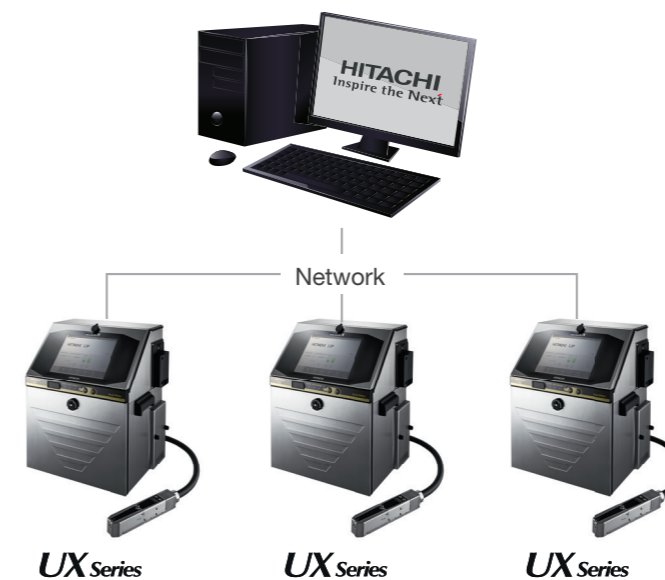
The UX Series features an integrated, easy-to-access troubleshooting guide, helping operators easily find answers to common issues and reducing downtime due to simple problems.



Convenient Remote Management

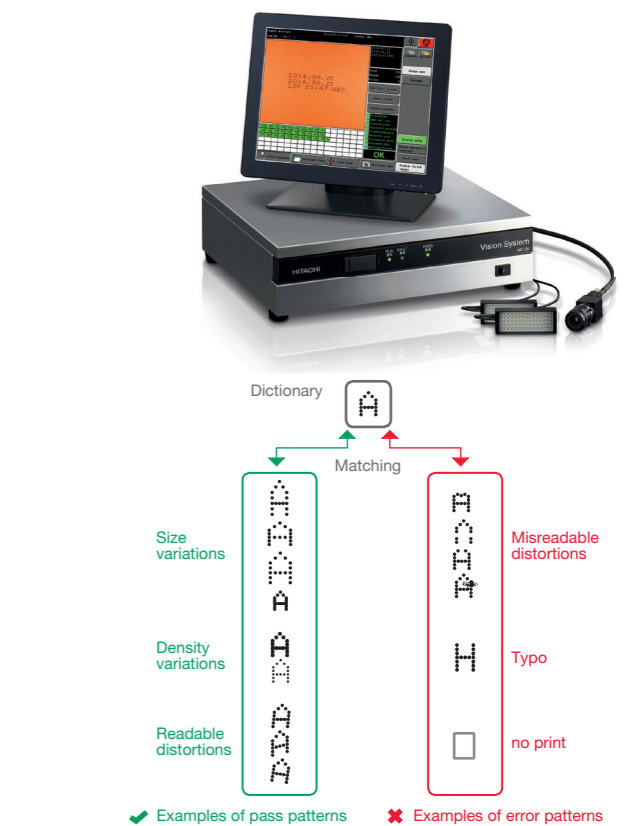
Ethernet is a standard feature on UX machines.* In addition, open network is supported, allowing easier system integration. Collective management via a host system enables two or more devices to be easily networked.

*UX-B excluded



Print Error Recognition

The Hitachi Vision System has been optimised to work with inkjet typical dot matrix characters. It verifies the content of each printed message instantaneously while allowing for typical CIJ character variations, assuring an optimal level of print quality.



Keep and Collect your Message

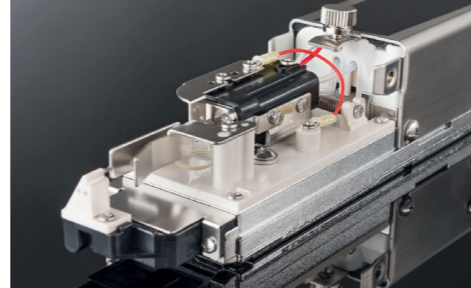
Messages can be easily backed up onto a USB flash drive for convenient transferring to multiple printers.



Versatile Durable Print Head

High Quality Components

HQ The UX Series printhead is built to last, keeping your marking and coding up and running. Open up the printhead and you'll see high-quality Hitachi parts that stand up to the harsh environments your printer runs in reducing your downtime and increasing your printer's efficiency.



Durable Ni-Cr Printhead



Ni-Cr The UX Series printhead is ready to work wherever you need it most. The UX Series features a new nickel-chrome* finish, giving it exceptional corrosion resistance and increasing the printhead's lifespan in demanding environments including wash-downs and exposure to caustic chemicals.

* partly Ni-Cr

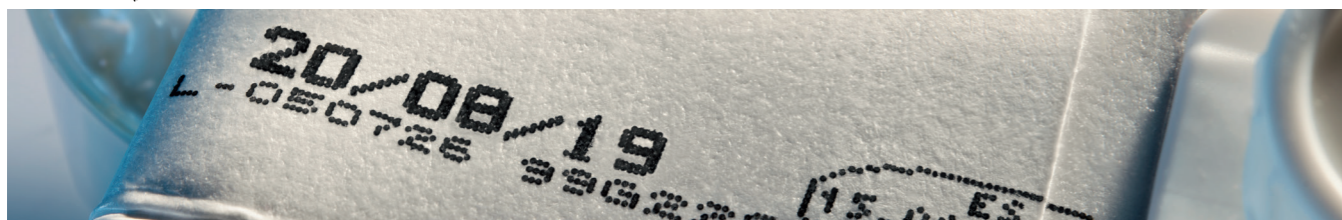
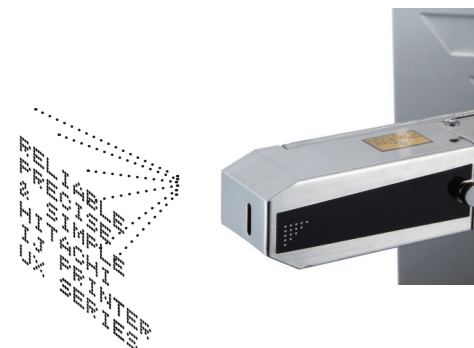
Versatile Tapered Print Head

△ Getting the printhead as close as possible to the product it is marking is the name of the game in non-contact printing and the UX series' tapered printhead design allows it to get millimeters away from products - helping it achieve a higher quality print than ever before.



Flexible Six-line Print

■ A single UX printhead can now print up to six lines of text by employing an innovative print control system. Also available in the UX Series is Hitachi's industry-first interlaced drop control system, resulting in the highest quality code available regardless of print height.

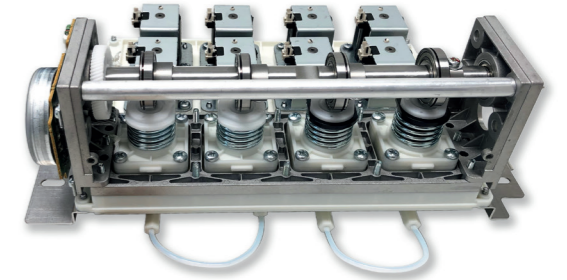


Reliability

Ink Circulation Unit

↻ At the heart of the UX Series inkjet printer is a diaphragm based circulation system. Unique to Hitachi, the UX's diaphragm system dramatically improves reliability, leading to a reduction in total cost of ownership.

A dedicated viscometer gives a true measure of the ink's viscosity further increasing reliability and uptime.



Reduced Make-up Consumption and Running Cost

💧 Motor Speed Control Function suppresses make-up evaporation and offers industry-leading level of make-up consumption.

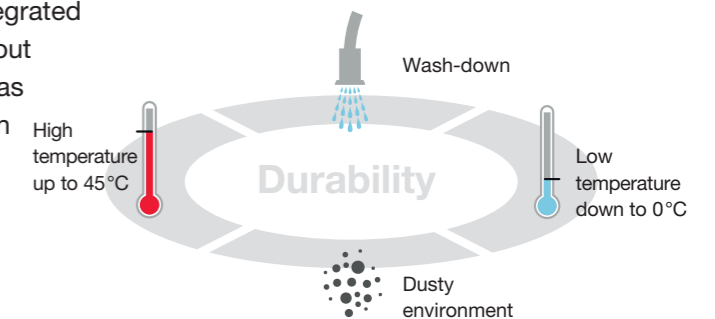
The premium model UX-E achieves a consumption of only 2.5 ml/h thanks to Hitachi's latest patented Fluid Consumption Reduction System.

2.5 ml/h*

*Hitachi Ink 1069k at 20°C

Worry-free Integration — Designed for harsh Environments

⚙️ The UX model printer is IP-65, so it can be integrated into a variety of production environments without modifying current production processes such as wash-down procedures. The UX can operate in temperatures as low as 0° C and up to temperatures as high as 45° C which means that the UX model is able to tolerate marking in a wide variety of environments - making it an ideal choice for most facilities.

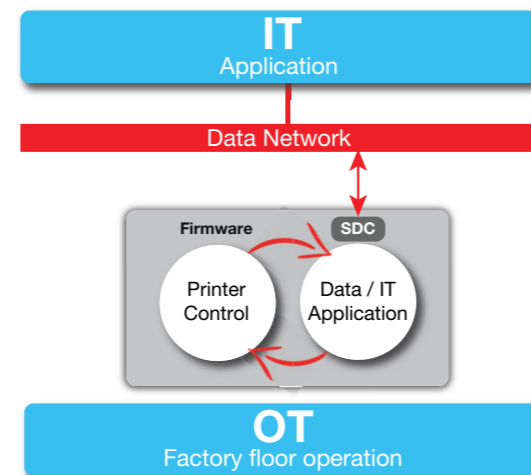


Connecting To The Future - Industry 4.0 Ready

Software Defined Controller

In effect SDC adds a new, intuitive way for our customers to communicate with our printer. SDC has the ability to build a bridge directly to your corporate ERP or other business management system. In traditional production environments, connecting the IT business systems with the factory floor poses many challenges. This often results in a complicated mix of proprietary systems with significant performance and support issues. However now with SDC, Hitachi is providing a direct bridge between the IT layer and the factory floor operation.

Examples of this: An IT professional could easily mine data necessary for business management from printers located on the factory floor without having intimate knowledge of the printers internal processes. In short, SDC can be used to seamlessly implement business logic.



Modern Communication Protocols

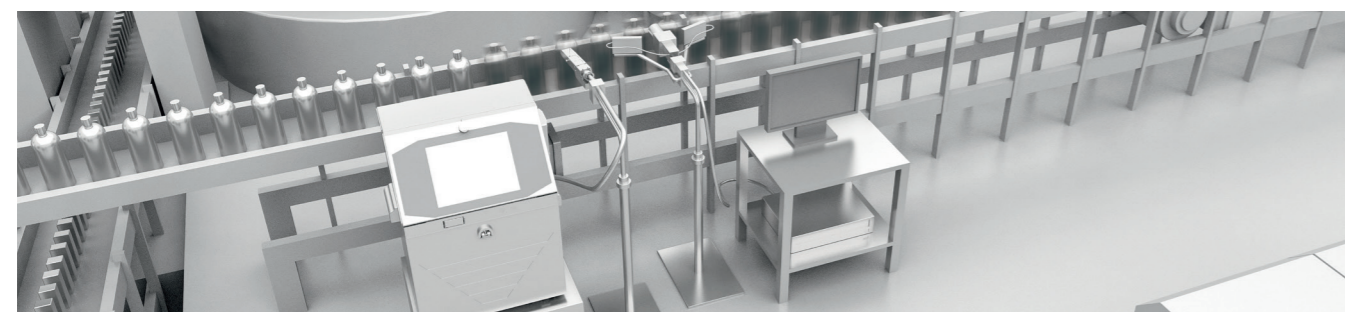
By employing modern open protocols such as OPC-UA, Hitachi's printers are ready for the upcoming Industry 4.0/IoT revolution. This open style data connectivity enables our printer to be compatible with virtually any networked platform regardless of OS. In addition, the latest UX printers* come equipped with Ethernet/IP, OPC-UA, Modbus, and Serial RS-232. Hitachi is currently the first CIJ manufacturer to gain ODVA approval for Ethernet/IP.



Immediate HMI Response

Upgraded processing power allows the printer* to react to operator inputs instantly, giving the user a lightning fast experience. The intuitive guided interface will feel familiar from the first use.

*Available for UX-D (D161W, D151W) and UX-P (UX-P161W)



Pigmented - High Performance for High Contrast

UX-P for Pigmented Inks



The UX Printer is designed for high contrast marking on dark surfaces with pigmented inks at highest quality. Typical application areas include automotive parts, cables, plastic piping and electronic components.



Worry-Free Standby Circulation

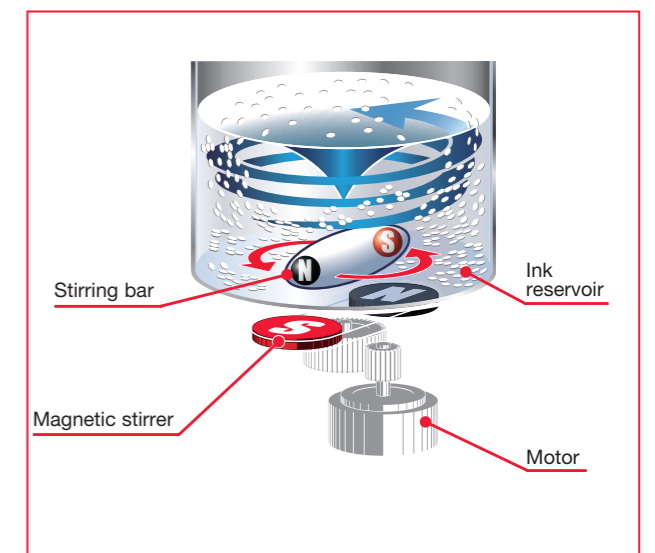


The UX Series Pigmented inkjet printer also incorporates an ink circulation control method that allows ink to circulate even in standby mode. This helps to prevent ink fixing, increasing operational efficiency and further reducing potential downtime.

Airless Stirring System



Most pigmented inkjet systems require air to prevent settling and agglomeration, but the UX-P inkjet printer relies on a simple, yet highly effective Magitate system. This system reduces filter and nozzle clogging and eliminates the need for costly modifications to your compressed air system.



Electric stirrer

Magnet + Agitate = Magitate



Twin Nozzle Model

Flexible Eight-line Print



The UX twin print head now offers the ability to produce 8 lines of text by combining two individual nozzles into one, compact design. In addition, by utilizing Hitachi's first on the market "interlaced" print control technique, multiple line messages are printed clearly and legibly, further reducing coding errors due to misprint.

High-speed Printing



Two nozzles at one print head realizes double-speed printing, which can track even on a high-speed production line, resulting in high-quality printing regardless of the number of print lines.

Versatile 64-Dot



Hitachi's innovative design now produces 64 vertical dots of print, resulting in large, bold characters. This makes the UX twin-nozzle printer ideally suited to mark company logos, UL marks, or any other pattern previously unachievable with traditional print heads.

Character Stitch Capability



A unique option in the new twin-nozzle printer is the ability to stitch both nozzles together. This results in characters that are bigger and bolder than ever, compared to those printed by individual nozzles. This is particularly useful when character recognition is needed at a distance from the product.

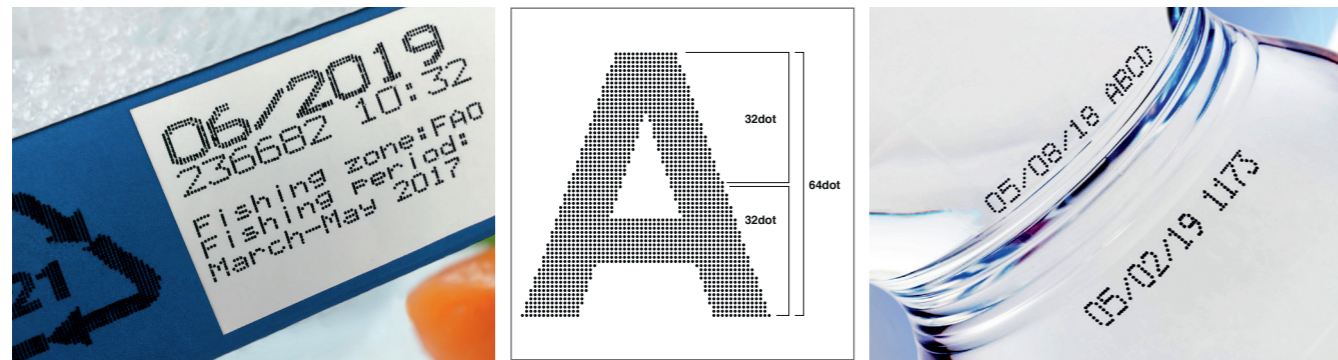


Image is for illustration purposes



Standard Print Samples

Standard Specifications

UX-B Model / UX-D Model / UX-E Model

65µm (Basic / Standard / Premium)

Font (Horizontal x Vertical)	UX-E160W (Premium)			
	UX Series		UX-D161W (Standard)	
5 x 5	1 LINE 0123456789ABCDEFGH	2 LINE 012345678 ABCDEFGHI	3 LINE 012345678 ABCDEFGHI JKLMNOPQR	6 LINE 012345678 ABCDEFGHI JKLMNOPQR STUVWXYZ ABCDEFGHI JKLMNOPQR
5 x 7	1 LINE 0123456789ABC	2 LINE 012345678 ABCDEFGHI	3 LINE 012345678 ABCDEFGHI JKLMNOPQR	4 LINE 012345678 ABCDEFGHI JKLMNOPQR STUVWXYZ
7 x 10	1 LINE 0123456789	2 LINE 01234567 ABCDEFGH	3 LINE 01234567890123456 ABCDEFGHIJKLNOPO TUVWXYZABCDEFGHIJ	
10 x 12	1 LINE 0123456789ABC		2 LINE 01234567890 ABCDEFGHIJK	
12 x 16	1 LINE 0123456789ABC		2 LINE 012 ABC	
18 x 24	1 LINE 0123456789 0123456ABC			
24 x 32	1 LINE 012345ABCD			
30 x 40	1 LINE 012345ABCDEF			
36 x 48	1 LINE 012345ABCD			

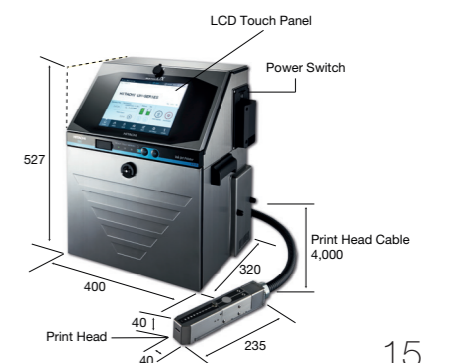


Standard Specifications

Item	Model		
	UX-B160W (Basic)	UX-D161W (Standard)	UX-E160W (Premium)
Nozzle Size	65µm		
Maximum number of print lines	Up to 3 lines	Up to 6 lines	
Maximum number of print characters	Up to 240 characters	Up to 240 characters (Option: Up to 1,000 characters)	Up to 1,000 characters
Font (Horizontal x Vertical)	4 x 5	-	✓
	5 x 5	✓	✓
	5 x 7(8), 9 x 7(8)	✓	✓
	7 x 10	✓	✓
	11 x 11	✓ (Chinese only)	✓ (Chinese only)
	10 x 12	✓	✓
	12 x 16	✓	✓
	18 x 24	✓	✓
24 x 32	-	✓	✓
30 x 40	-	✓	✓
36 x 48	-	✓	✓
Character height	2 - 10 mm		
Display & input device	WYSIWYG design display: TFT LCD (10.4" color), backlight provided input device: Touch panel, input sound provided		
Screen language (2 languages selectable)	English, Chinese, Korean, Thai, Vietnamese, German, French, Dutch, Italian, Spanish, Portuguese, Swedish, Danish, Greek, Russian, Czech, Polish, Arabic, Serbian, Turkish, Hungarian, Bulgarian, Catalan, Romanian, Finnish, Norwegian, Slovenian		
Maximum print rate (Character per second) (Font 5x5, space 1, 1 line)	Up to 1,148	Up to 1,148 (Option: Up to 2,296)	Up to 2,296
Standard characters	Alphanumeric (A-Z, a-z, 0-9), symbols (27) and space: Total 90		
User patterns	50 patterns each for dot matrix	200 patterns each for dot matrix (50 patterns for 30x40 and 36x48 fonts)	
Print functions	Calendar, Count, Font mixture, Password		
Barcode printing	-	code39, ITF, NW-7, EAN-13, EAN-8, UPC-A, UPC-E, code128/EAN-128, GS-1 DataBar	
2D printing	-	Data Matrix (Alphabet: 49 characters/Numbers: 98 characters), QR Code, Micro QR code	
Message storage capacity	150 Messages	300 Messages [Option: Up to 2,000 Messages (depends on data content)]	2,000 Messages (Depends on data content)
Input signal	Print target detection, Rotary encoder pulse, (NPN/PNP Selectable)	Print target detection, Printing stop, Rotary encoder pulse, Reciprocal printing, Remote control (Run, Stop, High-voltage ON/OFF, Reset), (NPN/PNP Selectable)	
Output signal	Print ready, Fault, Warning (NPN Only)	Print in progress or Print complete, Online (NPN/PNP Selectable), Print ready, Fault, Warning (NPN Only)	
Data interface	Option (RS-232C at baud rates selectable up to 115,200bps)	RS-232C at baud rates selectable up to 115,200bps	
Ethernet (Modbus/TCP, EtherNet/IP, OPC-UA)	-	IEEE802.3, 100BASE-T	
External memory	USB for user data storage		
Printhead cable length / angle	4m (in-line/90 degrees)	4m (in-line/90 degrees; Option: 6m)	4m (in-line/90 degrees)
Operating temperature range	0-45°C (1069K Ink)*		
Operating humidity range	30-90% RH (no condensation)		
Power supply (Automatic voltage selection)	AC100-120/220-240V±10% 50/60Hz 120 VA		
Approval	CE, UL, cUL, C-Tick, FCC, ICES		CE, C-Tick
Dimensions (Width x Depth x Height)	400 x 320 x 527 mm		
International protection	IP55	IP65	
Approximate weight	27kg		

* Ink types and temperature are limited.

Note: Main unit dimensions do not include any projections.



UX-D Model

55µm (High Speed) / 40µm (Small Characters)

Standard Print Samples — 55µm (High Speed)					
5 x 5	1 LINE	0123456789ABCDEFGH	2 LINE	012345678 ABCDEFGHI	
	1 LINE	012345678	3 LINE	012345678 ABCDEFGHI JKLMNOPQR	
5 x 7	1 LINE	0123456789ABC	2 LINE	012345678 ABCDEFGHI	
	1 LINE	0123456	3 LINE	012345678 ABCDEFGHI JKLMNOPQR	
7 x 10	1 LINE	0123456789	2 LINE	01234567 ABCDEFGH	
	1 LINE	012345	3 LINE	012345678901234567 ABCDEFGHIJKLMN OPQRSTUVWXYZ ABCDEFGHIJK	
12 x 16	1 LINE	0123456789ABC		2 LINE	01234 ABCDE
	1 LINE	012345	01		
18 x 24	1 LINE	0123456789			
	1 LINE	0123456ABC			

Standard Print Samples — 40µm (Small Characters)					
5 x 5	1 LINE	0123456789	2 LINE	0123456789 KLMNOPQRST	
	1 LINE	123456789	3 LINE	0123456789 IJKLMNOPQR 0123456789 IJKLMNOPQR	
5 x 7	1 LINE	123456789ABCDEFGH	2 LINE	123456789012345 ABCDEFGHIJKLMN	
	1 LINE	12345679AB	3 LINE	1234567890123456 ABCDEFGHIJKLMN abcdefghijklmnop ijklmno	
7 x 10	1 LINE	1234567890	2 LINE	1234567890123 ABCDEFGHIJKLM	
	1 LINE	123456789	3 LINE	12345678901234567890123456789 ABCDEFGHIJKLMN OPQRSTUVWXYZ 1234567890123456	
12 x 16	1 LINE	01234ABCDE		2 LINE	0123456789 ABCDEFGHIJ
	1 LINE	123456789ABC			
18 x 24	1 LINE	1234567ABCDEF			
24 x 32	1 LINE	1234567ABCDEF			

Standard Specifications			
Item	Model		
	UX-D151W	UX-D140W	
Nozzle Size	55µm	40µm	
Maximum number of print lines	Up to 4 lines	Up to 4 lines	
Maximum number of print characters	Up to 1,000 characters	Up to 1,000 characters	
Font (Horizontal x Vertical)	4 x 5	✓	✓
	5 x 5	✓	✓
	5 x 7(8), 9 x 7(8)	✓	✓
	7 x 10	✓	✓
	11 x 11	✓ (Chinese only)	✓ (Chinese only)
	10 x 12	-	-
	12 x 16	✓	✓
	18 x 24	✓**	✓
	24 x 32	-	✓
30 x 40	-	-	
36 x 48	-	-	
Character height	2 - 7 mm	2 - 5 mm	
Display & input device	WYSIWYG design display: TFT LCD (10.4" color), backlight provided input device: Touch panel, input sound provided		
Screen language (2 languages selectable)	English, Chinese, Korean, Thai, Vietnamese, German, French, Dutch, Italian, Spanish, Portuguese, Swedish, Danish, Greek, Russian, Czech, Polish, Arabic, Serbian, Turkish, Hungarian, Bulgarian, Catalan, Romanian, Finnish, Norwegian, Slovenian		
Maximum print rate (Character per second) (Font 5x5, space 1, 1 line)	Up to 3,173	Up to 3,030	
Standard characters	Alphanumeric (A-Z, a-z, 0-9), symbols (27) and space: Total 90		
User patterns	200 patterns each for dot matrix		
Print functions	Calendar, Count, Font mixture, Password		
Barcode printing	code39, ITF, NW-7, EAN-13, EAN-8, UPC-A, UPC-E, code128/EAN-128, GS-1 DataBar		
2D printing	Data Matrix (Alphabet: 49 characters/Numbers: 98 characters), QR Code, Micro QR code		
Message storage capacity	300 Messages [Option: Up to 2,000 Messages (depends on data content)]		
Input signal	Print target detection, Printing stop, Rotary encoder pulse, Reciprocal printing, Remote control (Run, Stop, High-voltage ON/OFF, Reset), (NPN/PNP Selectable)		
Output signal	Print in progress or Print complete, Online (NPN/PNP Selectable), Print ready, Fault, Warning (NPN Only)		
Data interface	RS-232C at baud rates selectable up to 115,200bps		
Ethernet	Modbus/TCP, Ethernet/IP, OPC-UA, IEEE802.3, 100BASE-T	Modbus/TCP, IEEE802.3, 100BASE-T	
External memory	USB for user data storage		
Printhead cable length / angle	4m (in-line/90 degrees)		
Operating temperature range	0-40°C (1069K Ink)*	0-35°C (1069K Ink)*	
Operating humidity range	30-90% RH (no condensation)		
Power supply (Automatic voltage selection)	AC100-120/220-240V±10% 50/60Hz 120 VA		
Approval	CE, UL, cUL, C-Tick, FCC, ICES		
Dimensions (Width x Depth x Height)	400 x 320 x 527 mm		
International protection	IP65		
Approximate weight	27kg		

* Ink types and temperature are limited.
** Please consult your sales representative for further upgrade options.

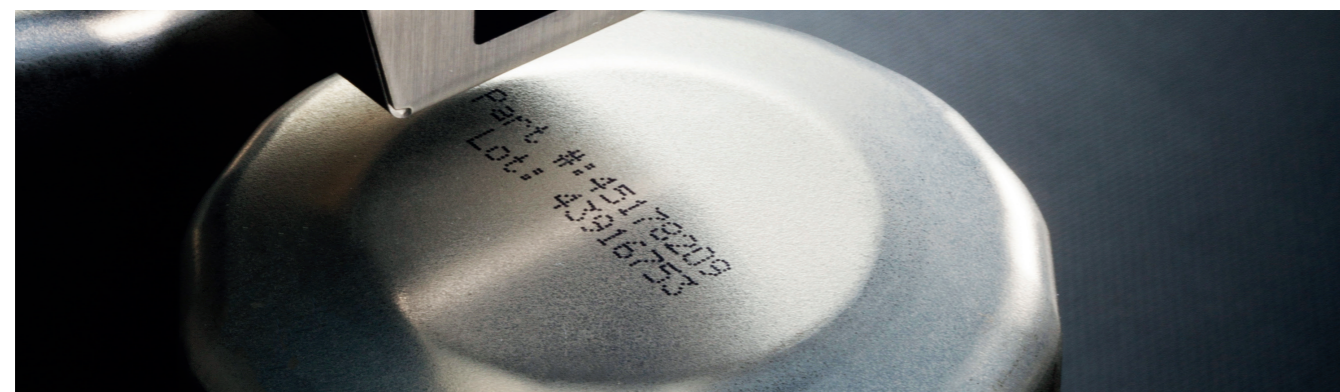


Note: Main unit dimensions do not include any projections.

UX-D Model

100µm (Large Characters)

Standard Print Samples				
4 x 5	1 LINE 01234567	2 LINE 01234567 ABCDEFGH	3 LINE 01234567 ABCDEFGH IJKLMNOP	4 LINE 01234567 ABCDEFGH IJKLMNOP 90123456
5 x 5	1 LINE 01234567	2 LINE 01234567 ABCDEFGH	3 LINE 12345678 ABCDEFGH 90123456	4 LINE 12345678 ABCDEFGH 90123456 IJKLMNOP
5 x 7	1 LINE 12345678	2 LINE 12345678 ABCDEFGH	3 LINE 12345678 ABCDEFGH 90123456	4 LINE 12345678 ABCDEFGH 90123456 IJKLMNOP
9 x 7	1 LINE 12345678	2 LINE 12345678 ABCDEFGH	3 LINE 123456789 ABCDEFGHI 012345678	4 LINE 123456789 ABCDEFGHI 012345678 JKLMNOPQR
7 x 10	1 LINE 1234567	2 LINE 123456 ABCDEF	3 LINE 123456789 ABCDEFGHI 012345678	
12 x 16	1 LINE 123456789		2 LINE 12345 ABCDE	
18 x 24	1 LINE 123456789			
24 x 32	1 LINE 123456789			



Standard Specifications		
Item	Model UX-D110W	
Nozzle Size	100µm	
Maximum number of print lines	Up to 4 lines	
Maximum number of print characters	Up to 1,000 characters	
Font (Horizontal x Vertical)	4 x 5	✓
	5 x 5	✓
	5 x 7(8), 9 x 7(8)	✓
	7 x 10	✓
	11 x 11	-
	10 x 12	-
	12 x 16	✓
	18 x 24	✓
	24 x 32	✓
	30 x 40	-
	36 x 48	-
Character height	2 - 20 mm	
Display & input device	WYSIWYG design display: TFT LCD (10.4" color), backlight provided input device: Touch panel, input sound provided	
Screen language (2 languages selectable)	English, Chinese, Korean, Thai, Vietnamese, German, French, Dutch, Italian, Spanish, Portuguese, Swedish, Danish, Greek, Russian, Czech, Polish, Arabic, Serbian, Turkish, Hungarian, Bulgarian, Catalan, Romanian, Finnish, Norwegian, Slovenian	
Maximum print rate (Character per second) (Font 5x5, space 1, 1 line)	Up to 468	
Standard characters	Alphanumeric (A-Z, a-z, 0-9), symbols (27) and space: Total 90	
User patterns	200 patterns each for dot matrix	
Print functions	Calendar, Count, Font mixture, Password	
Barcode printing	code39, ITF, NW-7, EAN-13, EAN-8, UPC-A, UPC-E, code128/EAN-128, GS-1 DataBar	
2D printing	Data Matrix (Alphabet: 49 characters/Numbers: 98 characters), QR Code, Micro QR code	
Message storage capacity	300 Messages [Option: Up to 2,000 Messages (depends on data content)]	
Input signal	Print target detection, Printing stop, Rotary encoder pulse, Reciprocal printing, Remote control (Run, Stop, High-voltage ON/OFF, Reset), (NPN/PNP Selectable)	
Output signal	Print in progress or Print complete, Online (NPN/PNP Selectable), Print ready, Fault, Warning (NPN Only)	
Data interface	RS-232C at baud rates selectable up to 115,200bps	
Ethernet	Modbus/TCP IEEE802.3, 100BASE-T	
External memory	USB for user data storage	
Printhead cable length / angle	4m (in-line/90 degrees)	
Operating temperature range	0-35°C (1069K Ink)*	
Operating humidity range	30-90% RH (no condensation)	
Power supply (Automatic voltage selection)	AC100-120/220-240V±10% 50/60Hz 120 VA	
Approval	CE, UL, cUL, C-Tick, FCC, ICES	
Dimensions (Width x Depth x Height)	400 x 320 x 527 mm	
International protection	IP65	
Approximate weight	27kg	

* Ink types and temperature are limited.



Note: Main unit dimensions do not include any projections.

UX-P Model

65µm (Pigmented)

Standard Print Samples

5 x 5	1 LINE 0123456789ABCDEF	2 LINE 012345678 ABCDEFGHI	3 LINE 012345678 ABCDEFGHI JKLMNOPQR	6 LINE 012345678 ABCDEFGHI JKLMNOPQR STUVWXYZ
5 x 7	1 LINE 0123456789ABC	2 LINE 012345678 ABCDEFGHI	3 LINE 012345678 ABCDEFGHI JKLMNOPQR	4 LINE 012345678 ABCDEFGHI JKLMNOPQR STUVWXYZ
7 x 10	1 LINE 0123456789	2 LINE 01234567 ABCDEFGH	3 LINE 0123456789012345678 ABCDEFGHIJKL MNOPQRS	4 LINE 0123456789012345678 ABCDEFGHIJKL MNOPQRS TUVWXYZ
10 x 12	1 LINE 0123456789ABCD	2 LINE 0123456789 ABCDEFGHIJK	3 LINE 0123456789012345678 ABCDEFGHIJKL MNOPQRS	4 LINE 0123456789012345678 ABCDEFGHIJKL MNOPQRS TUVWXYZ
12 x 16	1 LINE 0123456789ABC アイウエオカキクケコ	2 LINE 01234567 ABCDEFGH	3 LINE 0123456789012345678 ABCDEFGHIJKL MNOPQRS	4 LINE 0123456789012345678 ABCDEFGHIJKL MNOPQRS TUVWXYZ
18 x 24	1 LINE 0123456789	2 LINE 0123456789 ABCDEFGHIJKL	3 LINE 0123456789012345678 ABCDEFGHIJKL MNOPQRS	4 LINE 0123456789012345678 ABCDEFGHIJKL MNOPQRS TUVWXYZ
24 x 32	1 LINE 0123456789ABCDEF	2 LINE 0123456789 ABCDEFGHIJKL	3 LINE 0123456789012345678 ABCDEFGHIJKL MNOPQRS	4 LINE 0123456789012345678 ABCDEFGHIJKL MNOPQRS TUVWXYZ
30 x 40	1 LINE 0123456789ABCDEF	2 LINE 0123456789 ABCDEFGHIJKL	3 LINE 0123456789012345678 ABCDEFGHIJKL MNOPQRS	4 LINE 0123456789012345678 ABCDEFGHIJKL MNOPQRS TUVWXYZ
36 x 48	1 LINE 0123456789ABCDEF	2 LINE 0123456789 ABCDEFGHIJKL	3 LINE 0123456789012345678 ABCDEFGHIJKL MNOPQRS	4 LINE 0123456789012345678 ABCDEFGHIJKL MNOPQRS TUVWXYZ

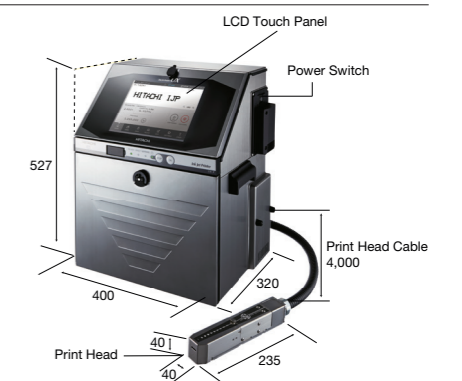
Logo **JIS mark** **CE mark** **UL mark** **DIN printing** **Chimney printing**



Standard Specifications

Item	Model UX-P161W	
Nozzle Size	65µm	
Maximum number of print lines	Up to 6 lines	
Maximum number of print characters	Up to 1,000 characters	
Font (Horizontal x Vertical)	4 x 5	✓
	5 x 5	✓
	5 x 7(8), 9 x 7(8)	✓
	7 x 10	✓
	11 x 11	✓ (Chinese only)
	10 x 12	✓
	12 x 16	✓
	18 x 24	✓
24 x 32	✓	
30 x 40	✓	
36 x 48	✓	
Character height	2 - 10 mm	
Display & input device	WYSIWYG design Display: TFT LCD (10.4" color), backlight provided Input device: Touch panel, input sound provided	
Screen language (2 languages selectable)	English, Chinese, Korean, Thai, Vietnamese, German, French, Dutch, Italian, Spanish, Portuguese, Swedish, Danish, Greek, Russian, Czech, Polish, Arabic, Serbian, Turkish, Hungarian, Bulgarian, Catalan, Romanian, Finnish, Norwegian, Slovenian	
Maximum print rate (Character per second) (Font 5x5, space 1, 1 line)	Up to 2,083 (JP-W89 Ink)	
Standard characters	Alphanumeric (A-Z, a-z, 0-9), symbols (27) and space: Total 90	
User patterns	200 patterns each for dot matrix	
Print functions	Calendar, Count, Font mixture	
Barcode printing	code39, ITF, NW-7, EAN-13, EAN-8, UPC-A, UPC-E, code128/EAN-128, GS-1 DataBar	
2D printing	Data Matrix (Alphabet: 49 characters/Numerals: 98 characters), QR, Micro QR code	
Message storage capacity	Up to 2,000 Messages (Depends on data content)	
Input signal	Print target detection, Printing stop, Rotary encoder pulse, Reciprocatve printing, Remote control (Run, Stop, High-voltage ON/OFF, Reset), (NPN/PNP Selectable)	
Output signal	Print in progress or Print complete, Online (NPN/PNP Selectable), Print ready, Fault, Warning (NPN Only)	
Data interface	RS-232C at baud rates selectable up to 115,200bps	
Ethernet	Modbus/TCP, EtherNet/IP, OPC-UA, IEEE802.3, 100BASE-T	
External memory	USB for user data storage	
Printhead cable length / angle	4m (in-line/90 degrees)	
Operating temperature range	0-40°C (JP-W89 Ink)*	
Operating humidity range	30-90% RH (no condensation)	
Power supply (Automatic voltage selection)	AC100-120/220-240V±10% 50/60Hz 120 VA	
Approval	CE, UL, cUL, RCM, FCC, ICES	
Dimensions (Width x Depth x Height)	400 x 320 x 527 mm	
International protection	IP65	
Approximate weight	27kg	

* Ink types and temperature are limited.



Note: Main unit dimensions do not include any projections.

UX-Twin Model

65µm (Double nozzle)

Standard Specifications			
High-speed printing	2 LINE	Nozzle 2 01234567	2 LINE Nozzle 2 01234567
		Nozzle 1 ABCDEFGH <small>160m/min, Font: 5x7</small>	Nozzle 1 ABCDEFGH <small>200m/min, Font: 5x7</small>
2,3-line printing	2 LINE	Nozzle 2 01234567890	3 LINE Nozzle 2 01234567890 Nozzle 1 ABCDEFGHIJK <small>Font: 7x10</small>
		Nozzle 1 ABCDEFGHIJK <small>Font: 7x10</small>	
Multi-line printing (4line, 8line)	4 LINE	Nozzle 2 (2 line English) 05/08/18 ABCD 05/02/19 1234	8 LINE Nozzle 2 (4 line) SELL BY AUG 8 MANUFACTURED BY HIES 11:37:17 BEST BY 05 FEB(FEB)2020 LOU 8929 0417 6557 Nozzle 1 (4 line) HITACHI INDUSTRIAL EQUIPMENT MADE IN JAPAN TEL: +81-4345-6077 TOS 9001 <small>Font: 5x7</small>
		Nozzle 1 (2 line Arabic) ٠٥/٠٨/١٨ ا ب ج د ٠٥/٠٢/١٩ ١ ٢ ٣ ٤ <small>Font: 5x8</small>	
Dot mixture	Nozzle 2	ABCD BEST BY HIES UX 017H04 S28N02	
	Nozzle 1	05FEB(FEB)2019 <small>Font: 5x8, 12x6</small>	
	Nozzle 2	UX TWIN TOKYO EXPO PACKAGING TECHNICAL AREA CODING 860	
Logos*	Nozzle 2	Nozzle 2	Nozzle 2
	Nozzle 1	Nozzle 1	Nozzle 1
Bold characters	Nozzle 2	5x7 BOLD 2 LINE S 5x7 BOLD 2 LINE B	
	Nozzle 1	5x7 BOLD 2 LINE S 5x7 BOLD 2 LINE B <small>Font: 5x7</small>	
Chimney characters	Nozzle 2	Nozzle 2	Nozzle 2
	Nozzle 1	Nozzle 1	Nozzle 1
Inverted characters (DIN printing)	Nozzle 2	12X16 DIN PRINT	
	Nozzle 1	PRINT 12X16 DIN <small>Font: 12x6, 7x5</small>	
Barcodes, QR Codes & Datamatrix	Nozzle 2	Nozzle 2	Nozzle 2
	Nozzle 1	Nozzle 1	Nozzle 1

* When printing logos, please make sure the image is acceptable to the association or the organization.



Standard Specifications		Model
		UX-D860W
Nozzle Size		65µm
Maximum number of print lines		Up to 8 lines
Maximum number of print characters		Up to 1,000 characters
Font (Horizontal x Vertical)	4 x 5	✓
	5 x 5	✓
	5 x 7(8), 9 x 7(8)	✓
	7 x 10	✓
	11 x 11	✓ (Chinese only)
	10 x 12	✓
	12 x 16	✓
	18 x 24	✓
	24 x 32	✓
30 x 40	✓	
36 x 48	✓	
48 x 64	✓	
Character height		2 - 21 mm
Display & input device		WYSIWYG design; Display: TFT LCD (10.4" color), backlight provided Input device: Touch panel, input sound provided
Screen language (2 languages selectable)		English, Chinese, Korean, Thai, Vietnamese, German, French, Dutch, Italian, Spanish, Portuguese, Swedish, Danish, Greek, Russian, Czech, Polish, Arabic, Serbian, Turkish, Hungarian, Bulgarian, Catalan, Romanian, Finnish, Norwegian, Slovenian
Maximum print rate (Character per second) (Font 5x5, space 1, 1 line/nozzle)		Up to 2,296 per nozzle
Standard characters		Alphanumeric (A-Z, a-z, 0-9), symbols (27) and space: Total 90
User patterns		200 patterns each for dot matrix (50 patterns for 30x40, 36x48, 48x64 fonts)
Print functions		Calendar, Count, Font mixture, Shift Code
Barcode printing		code39, ITF, NW-7, EAN-13, EAN-8, UPC-A, UPC-E, code128/EAN-128, GS-1 DataBar
2D code printing		Data Matrix (Alphabet: 49 characters/Numerals: 98 characters), QR Code, Micro QR code
Message storage capacity		Up to 2,000 messages (Depends on data content)
Input signal		Print target detection, Printing stop, Rotary encoder pulse, Reciprocal printing, Remote control (Run, Stop, High-voltage ON / OFF, Reset), (NPN / PNP Selectable)
Output signal		Print in progress or Print complete, Online (NPN / PNP Selectable), Print ready, Fault, Warning (NPN Only)
Data interface		RS-232C at baud rates selectable up to 115,200bps
Ethernet (Modbus communication)		IEEE802.3, 100BASE-T
External memory		USB for user data storage
Printhead cable length / angle		4m (in-line/90 degrees)
Operating temperature range		0-40° (1072K Ink)*
Operating humidity range		30-90% RH (no condensation)
Power supply (Automatic voltage selection)		AC100-120/220-240V±10% 50/60Hz 150VA
Approval		CE, UL, cUL, RCM, FCC, ICES
Dimensions (Width x Depth x Height)		400 x 395 x 527 mm
International protection		IP55
Approximate weight		34kg

* Ink types and temperature are limited.



Note: Main unit dimensions do not include any projections.

Head Office

Japan

Hitachi Industrial Equipment Systems Co., Ltd.
Phone: +81 3 3258 1111
www.hitachi-ies.co.jp
info@hitachicoding.com

Sales Offices

America

Hitachi America, Ltd.
Phone: +1 866 583 0048
www.hitachi-america.us/jjp
InkJet-printers@hal.hitachi.com

Asia

Hitachi Asia Ltd.
Phone: +65 6305 7400
www.hitachi.com.sg

China

Hitachi Industrial Equipment Systems (China) Co., Ltd.
Phone: +86 21 5489 2378
www.hitachi.com.cn

Europe

Hitachi Europe GmbH
Phone: +49 211 5283 0
www.hitachi-industrial.eu
info@hitachicoding.com

Oceania

Hitachi Australia Pty Ltd.
Phone: +61 2 9888 4100
www.hitachi.com.au

Follow us:



DB-UX-09/19-EN

All company and product names in this brochure are the property of the respective companies.

Hitachi Industrial Equipment Systems Co., Ltd. (Hitachi) shall not be liable for any manufacturing loss, or any product damage due to trouble or malfunction of the ink jet printer. Hitachi continually improves products. The right therefore, is reserved to alter the designs and/or specifications without giving prior notice. Information in this brochure is subject to change without notice.